



2023 annual report to the Community

Hewett Primary School

Hewett Primary School number: 1876

Partnership: Greater Gawler



School principal:

Matthew Saunders

Signature

Date of endorsement:

20/02/2024



Context Statement

Hewett Primary School caters for students from R-6. At the time of this report, the enrolment in 2023 is 420. Hewett Primary School is classified as Category 6 on the Department for Education Index of Educational Disadvantage. At the time of this report, the school population includes 4% Aboriginal students, 19% students with disabilities, 1% children/young people in care. Further information about the school is available on the school's website (including its context statement), as well as the My School website.

Governing Council Report

In 2023 the Governing Council was well supported with a good range of representation. The Governing Council had meetings twice a term where financial reporting was provided to monitoring spending against the budget.

The Governing Council approved that OSHC was rolled over for another 3 year tenure and reviewed the price increases to ensure families were not disadvantaged. The Governing Council were involved in the move of the Concert due to forecasted bad weather and supported the need to amend school trips as a result of a wave of COVID at the end of the year.

The Governing Council were involved in reviewing:

- the success of literacy processes as part of the Site Improvement Plan (SIP);
- the reduction of communication platforms and the implementation of the Academy system to sign children in and out and the text message absent notification and injuries rolled out;
- the role out of the new website;
- reduction in newsletters and moving to an online platform;
- and endorsement of the shades for the Nature Play area.

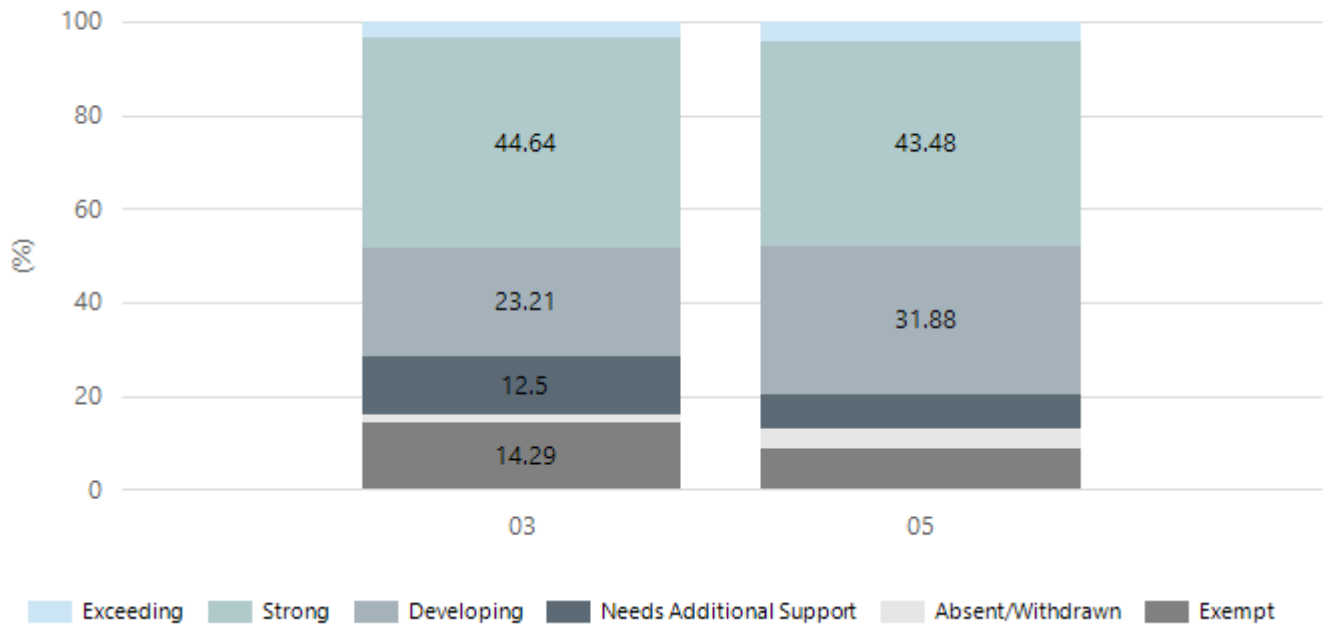
After 7 years on the Governing Council Chantal Barrass is stepping down, having been Chairperson since 2019. Chantal thanks all past and present members for their contributions to the Governing Council, especially while in the role of Chairperson.

Performance Summary

NAPLAN Proficiency

In 2023, the Australian Curriculum, Assessment and Reporting Authority (ACARA) - a Commonwealth Independent statutory authority - announced changes to NAPLAN performance reporting. This new way of reporting by ACARA that NAPLAN results from 2023 will not be comparable to previous years. The new approach replaces the previous numerical NAPLAN bands and the national minimum standard.

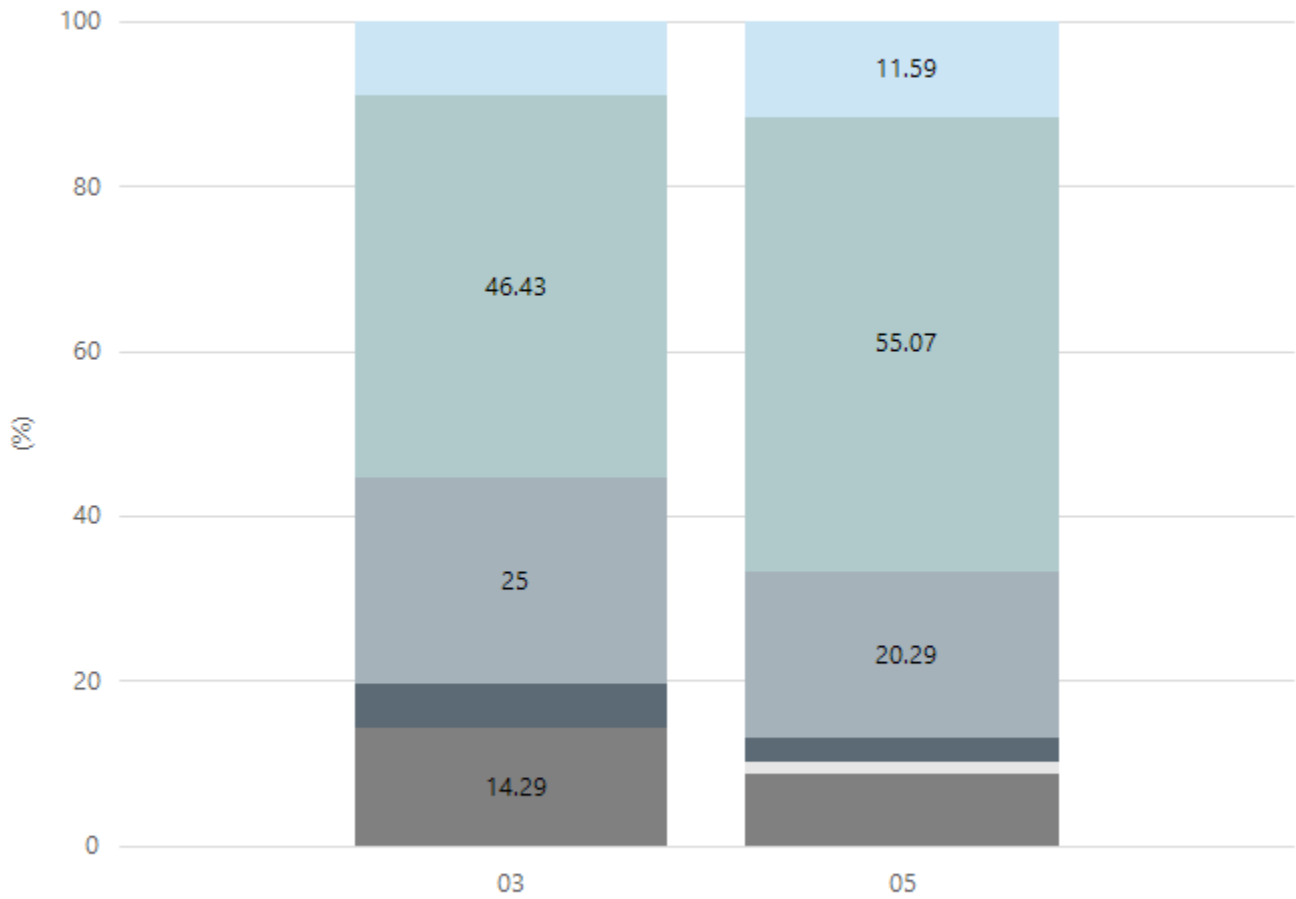
Numeracy



Year Level	03	05
Exceeding	2	3
Strong	25	30
Developing	13	22
Needs Additional Support	7	5
Absent/Withdrawn	1	3
Exempt	8	6
Total	56	69

Data Source: Department for Education Assessment Data Holdings, 2023. When there are less than six students in a cohort, no data is supplied.

Reading

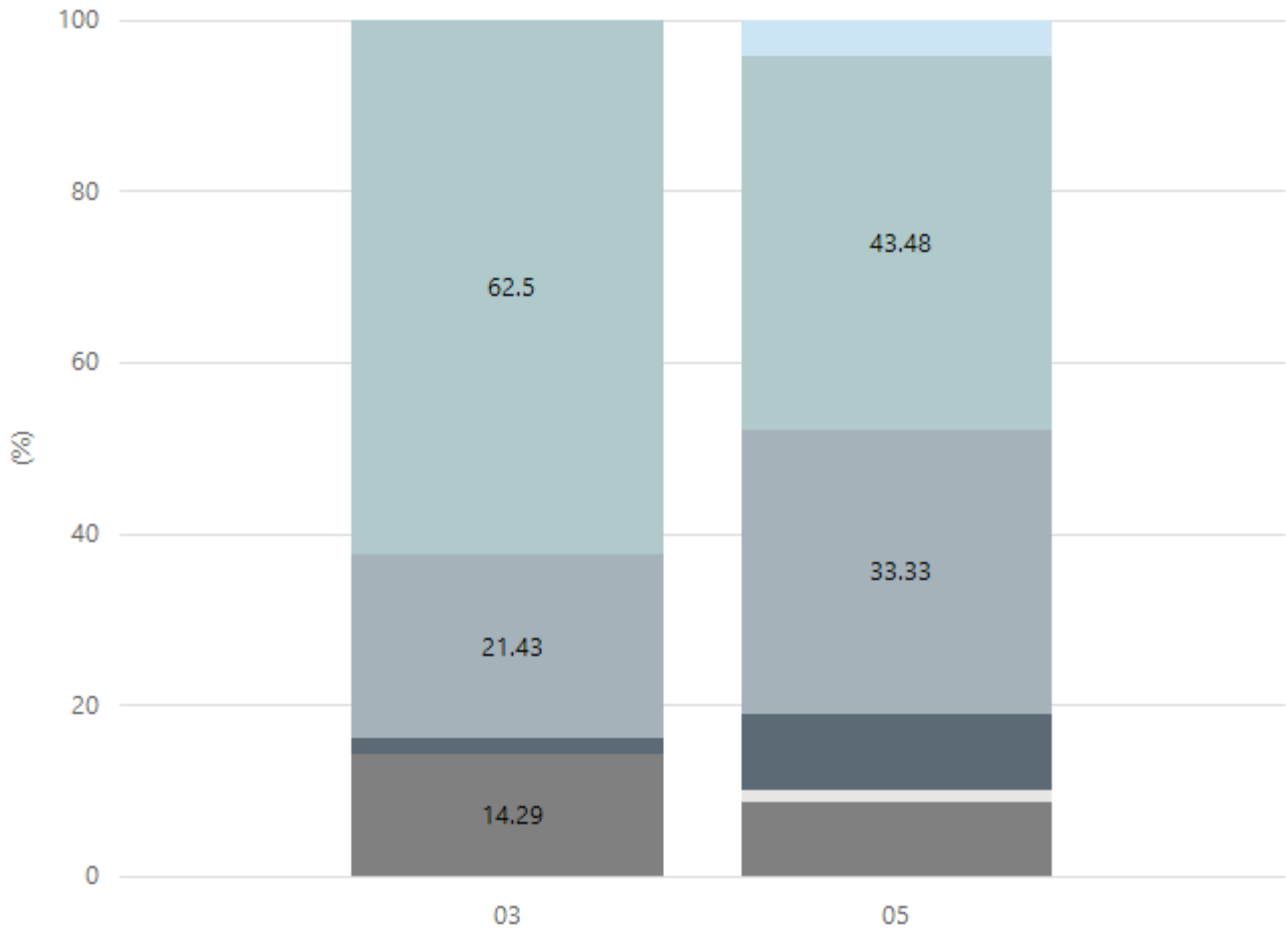


Exceeding Strong Developing Needs Additional Support Absent/Withdrawn Exempt

Year Level	03	05
Exceeding	5	8
Strong	26	38
Developing	14	14
Needs Additional Support	3	2
Absent/Withdrawn		1
Exempt	8	6
Total	56	69

Data Source: Department for Education Assessment Data Holdings, 2023. When there are less than six students in a cohort, no data is supplied.

Writing

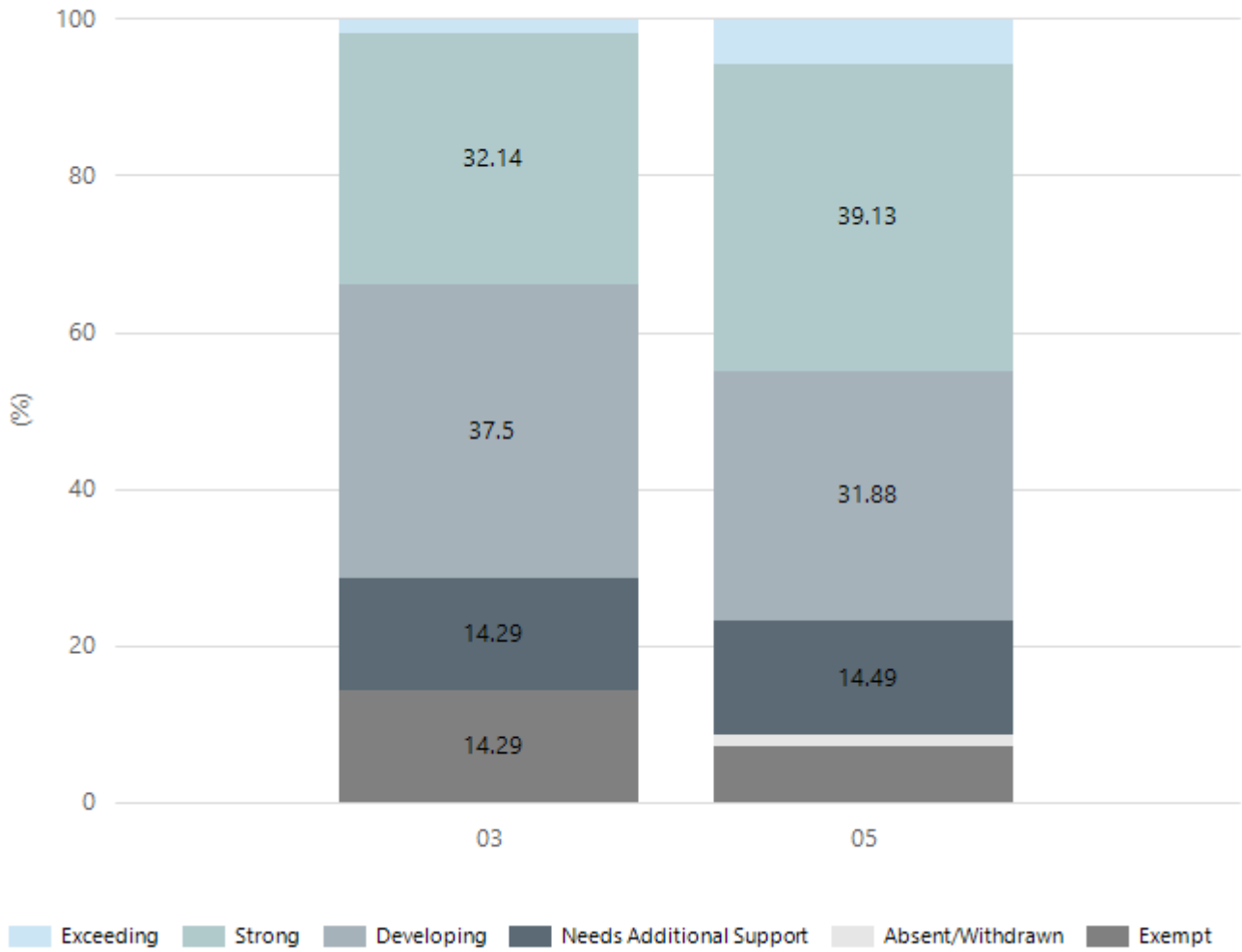


Exceeding Strong Developing Needs Additional Support Absent/Withdrawn Exempt

Year Level	03	05
Exceeding		3
Strong	35	30
Developing	12	23
Needs Additional Support	1	6
Absent/Withdrawn		1
Exempt	8	6
Total	56	69

Data Source: Department for Education Assessment Data Holdings, 2023. When there are less than six students in a cohort, no data is supplied.

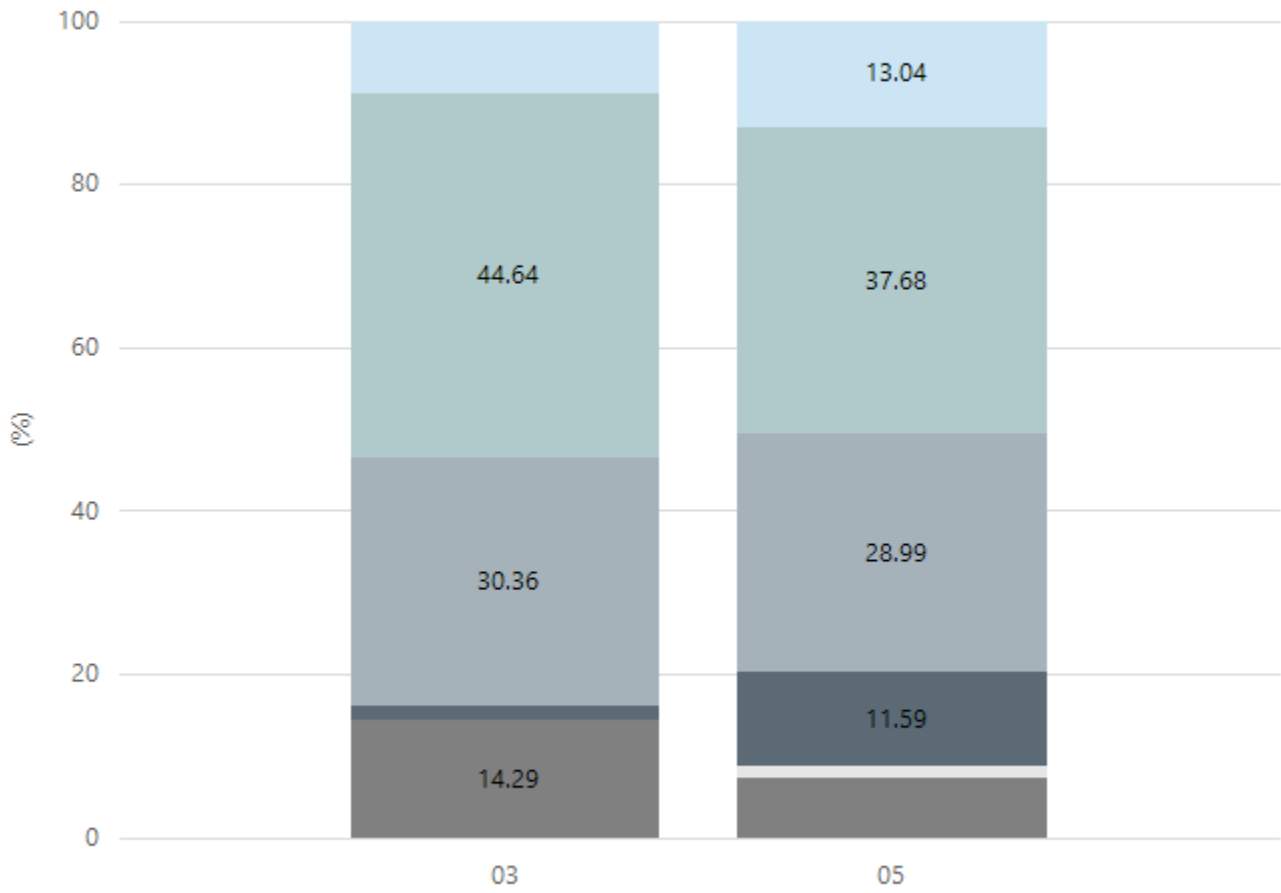
Grammar



Year Level	03	05
Exceeding	1	4
Strong	18	27
Developing	21	22
Needs Additional Support	8	10
Absent/Withdrawn		1
Exempt	8	5
Total	56	69

Data Source: Department for Education Assessment Data Holdings, 2023. When there are less than six students in a cohort, no data is supplied.

Spelling



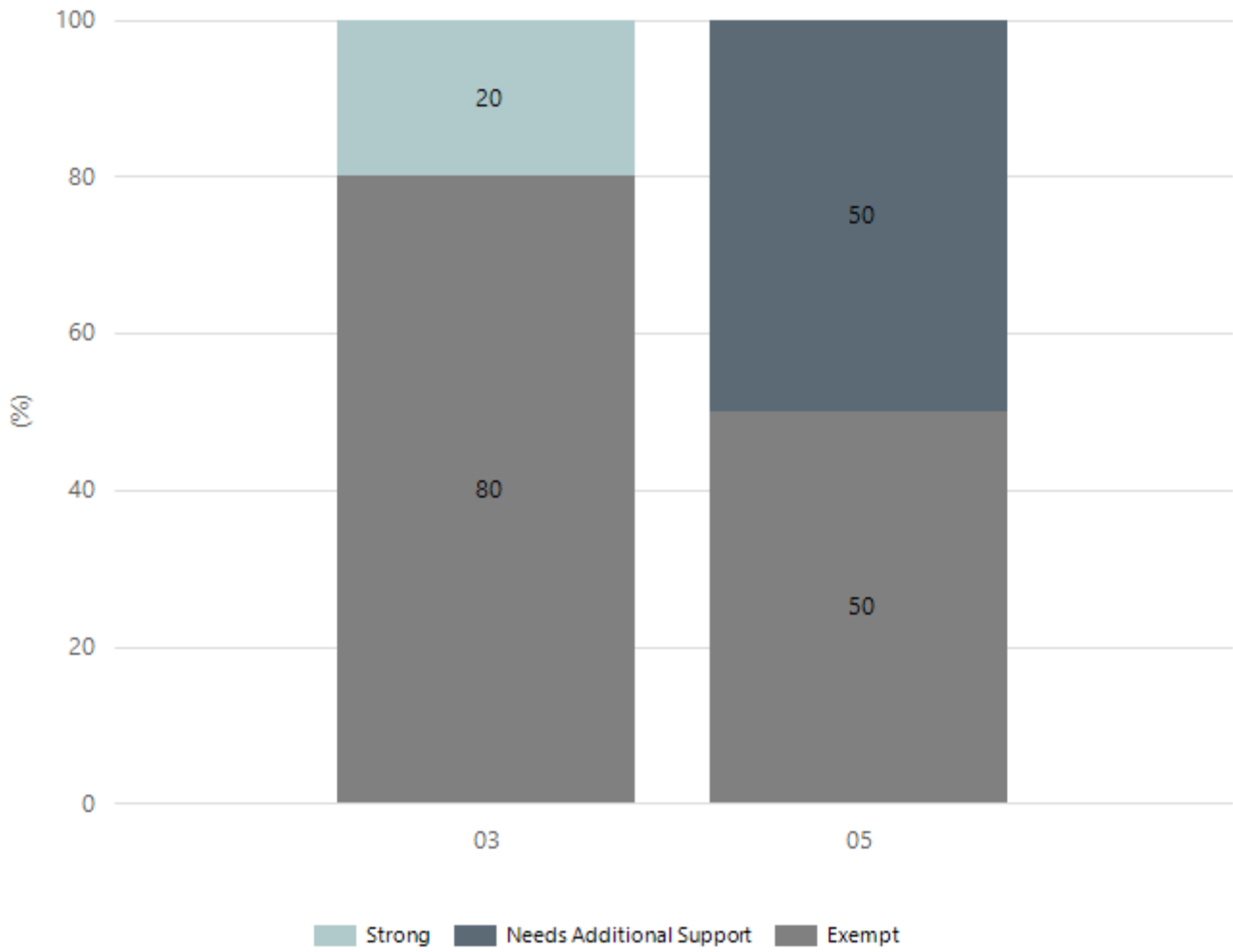
Exceeding Strong Developing Needs Additional Support Absent/Withdrawn Exempt

Year Level	03	05
Exceeding	5	9
Strong	25	26
Developing	17	20
Needs Additional Support	1	8
Absent/Withdrawn		1
Exempt	8	5
Total	56	69

Data Source: Department for Education Assessment Data Holdings, 2023. When there are less than six students in a cohort, no data is supplied.

NAPLAN Proficiency - Aboriginal Learners

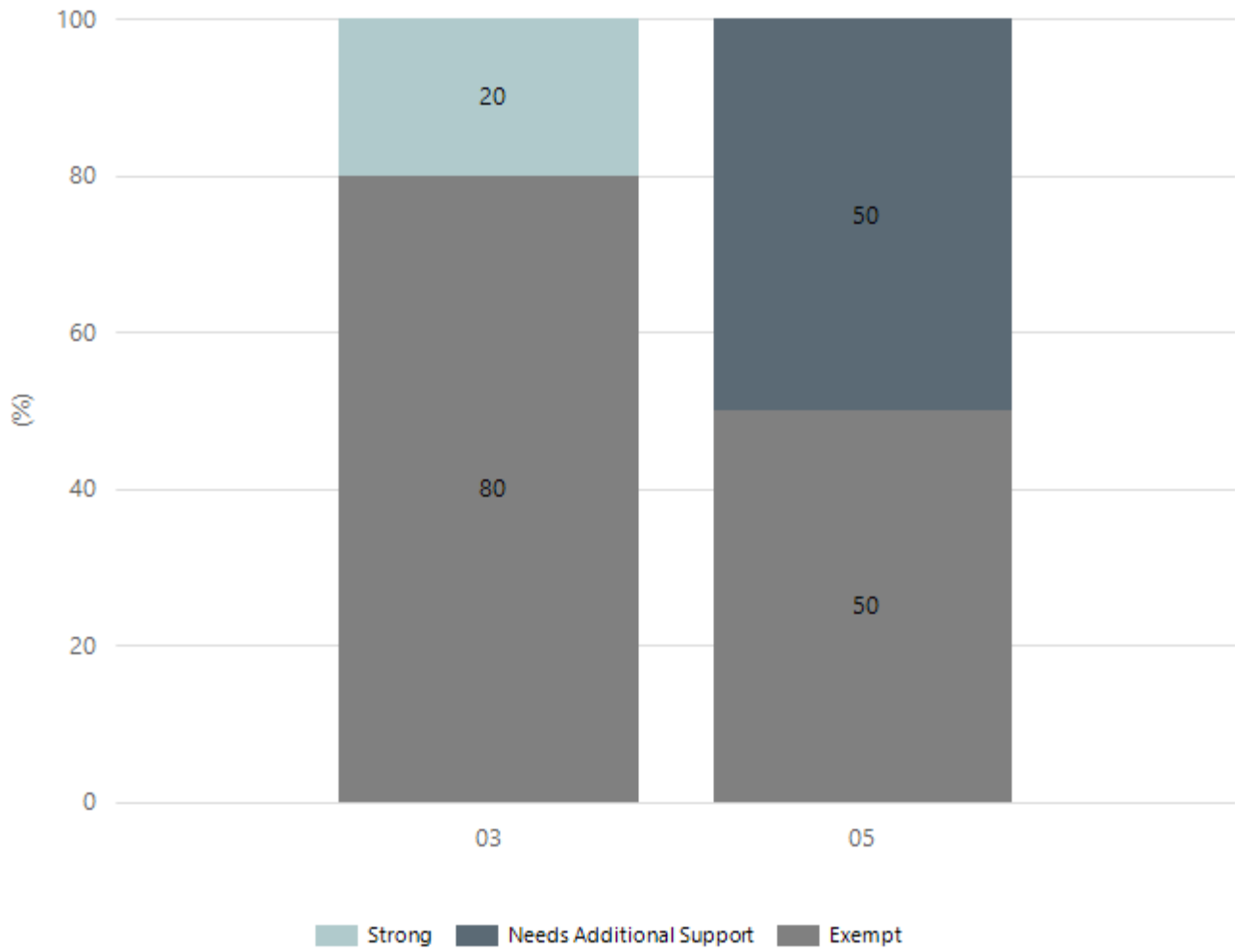
Numeracy



Year Level	03	05
Strong	1	
Needs Additional Support		1
Exempt	4	1
Total	5	2

Data Source: Department for Education Assessment Data Holdings, 2023. When there are less than six students in a cohort, no data is supplied. Only data for Aboriginal learners is displayed.

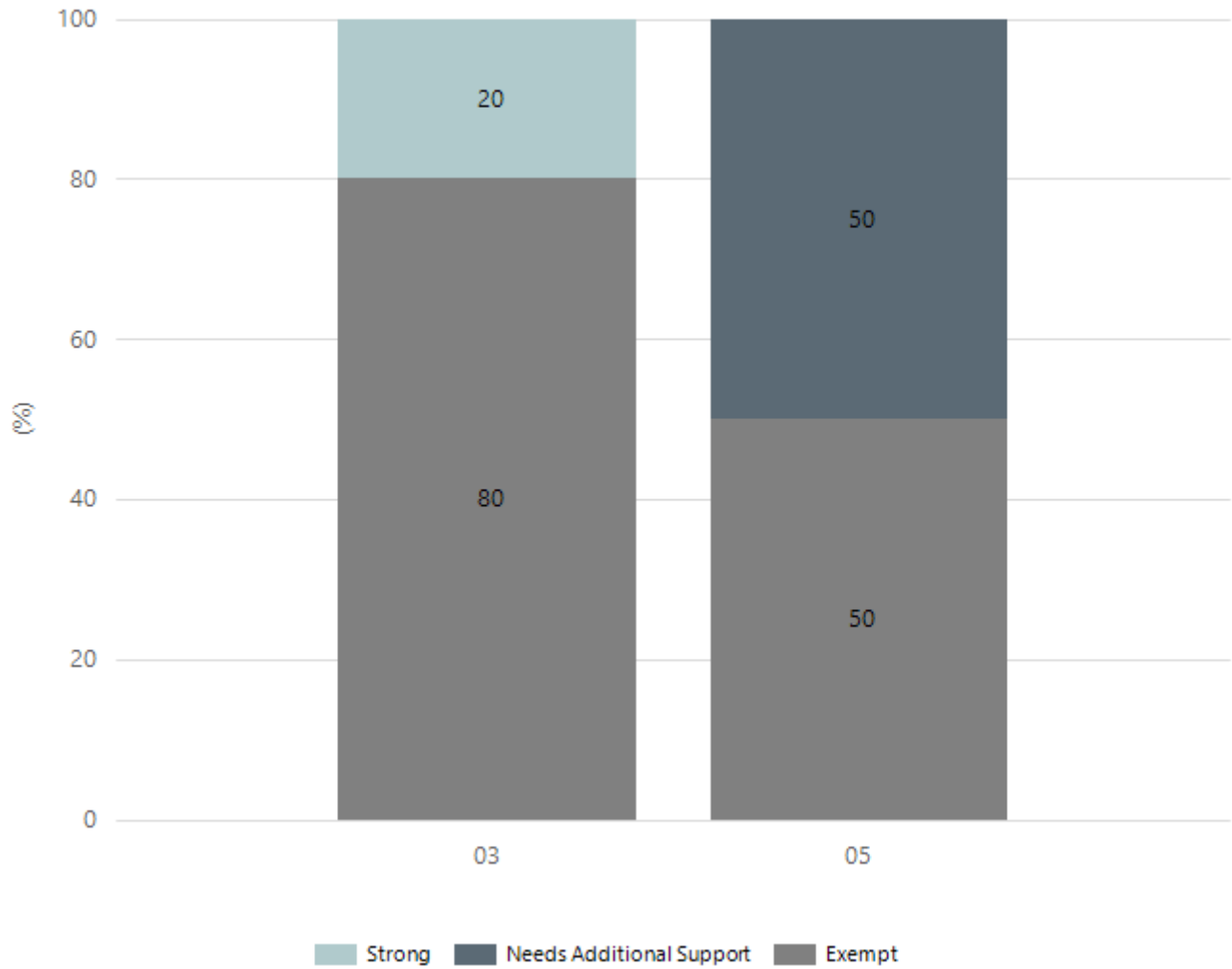
Reading



Year Level	03	05
Strong	1	
Needs Additional Support		1
Exempt	4	1
Total	5	2

Data Source: Department for Education Assessment Data Holdings, 2023. When there are less than six students in a cohort, no data is supplied. Only data for Aboriginal learners is displayed.

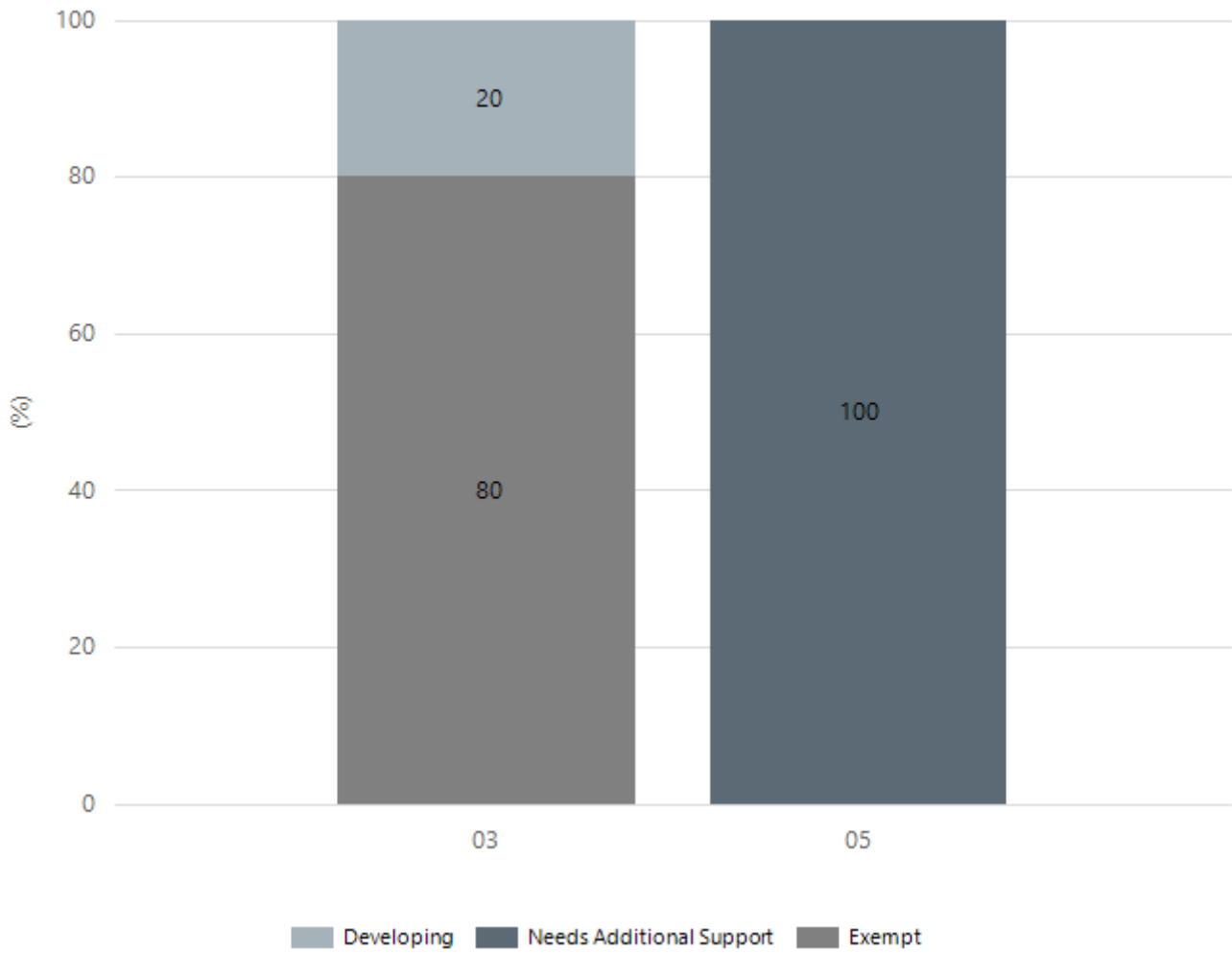
Writing



Year Level	03	05
Strong	1	
Needs Additional Support		1
Exempt	4	1
Total	5	2

Data Source: Department for Education Assessment Data Holdings, 2023. When there are less than six students in a cohort, no data is supplied. Only data for Aboriginal learners is displayed.

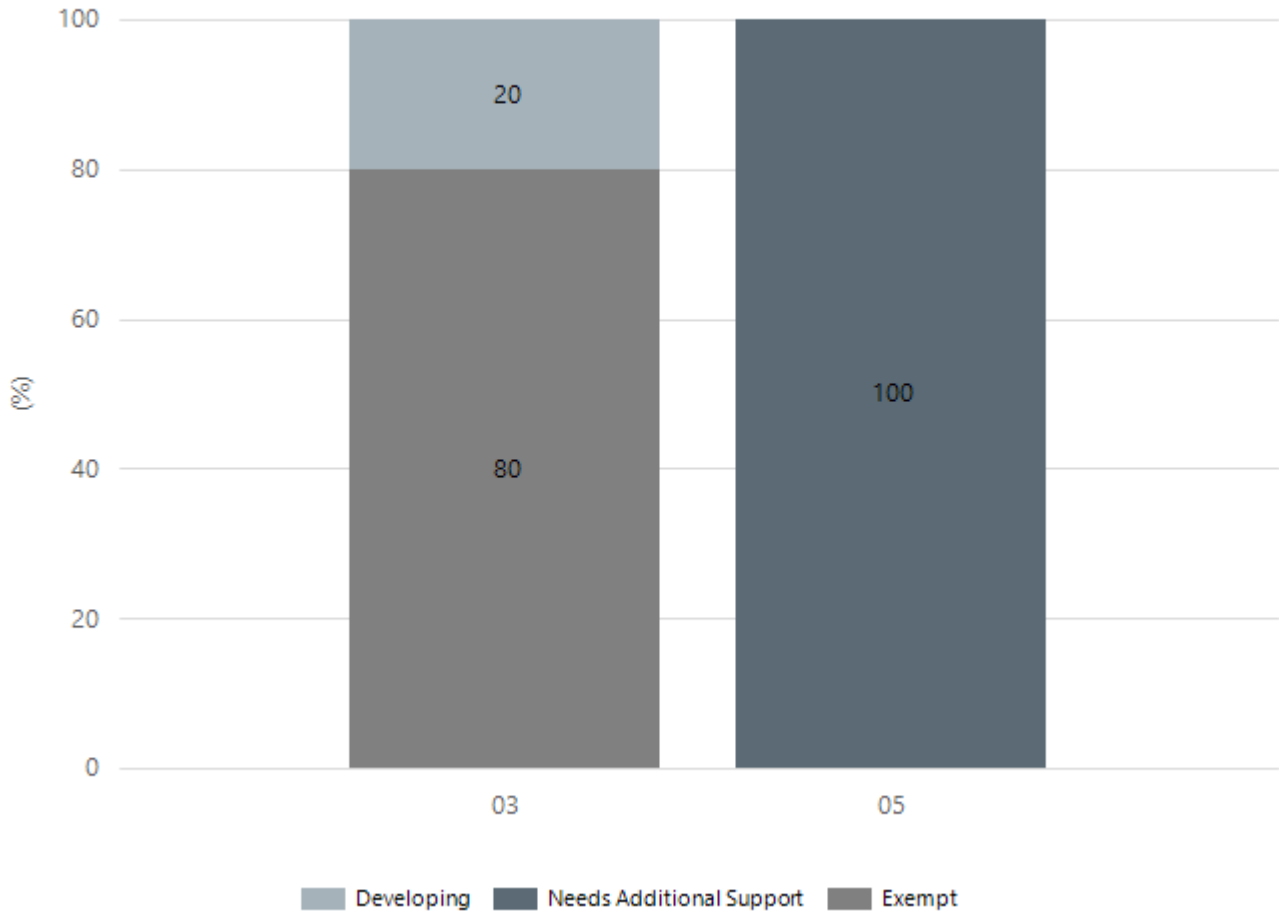
Grammar



Year Level	03	05
Developing	1	
Needs Additional Support		2
Exempt	4	
Total	5	2

Data Source: Department for Education Assessment Data Holdings, 2023. When there are less than six students in a cohort, no data is supplied. Only data for Aboriginal learners is displayed.

Spelling



Year Level	03	05
Developing	1	
Needs Additional Support		2
Exempt	4	
Total	5	2

Data Source: Department for Education Assessment Data Holdings, 2023. When there are less than six students in a cohort, no data is supplied. Only data for Aboriginal learners is displayed.

School Attendance

Year Level	2021	2022	2023
Reception	92.1%	86.4%	89.4%
Year 01	90.2%	90.5%	90.1%
Year 02	92.7%	89.7%	90.6%
Year 03	93.3%	88.3%	91.4%
Year 04	90.6%	87.5%	87.8%
Year 05	91.8%	84.0%	88.2%
Year 06	91.5%	86.0%	89.6%
Year 07	84.8%		
Primary Other	80.2%	79.0%	85.4%
Secondary Other			100.0%
Total	90.9%	86.9%	89.2%

Data Source: Department for Education Attendance Data, Semester 1 Report 2023. A blank cell indicates there were no students enrolled. 'Primary Other' includes students enrolled in specialised education options. 'Secondary Other' includes students who have already spent a year at Year 12 and elected to undertake further study at Year 12.

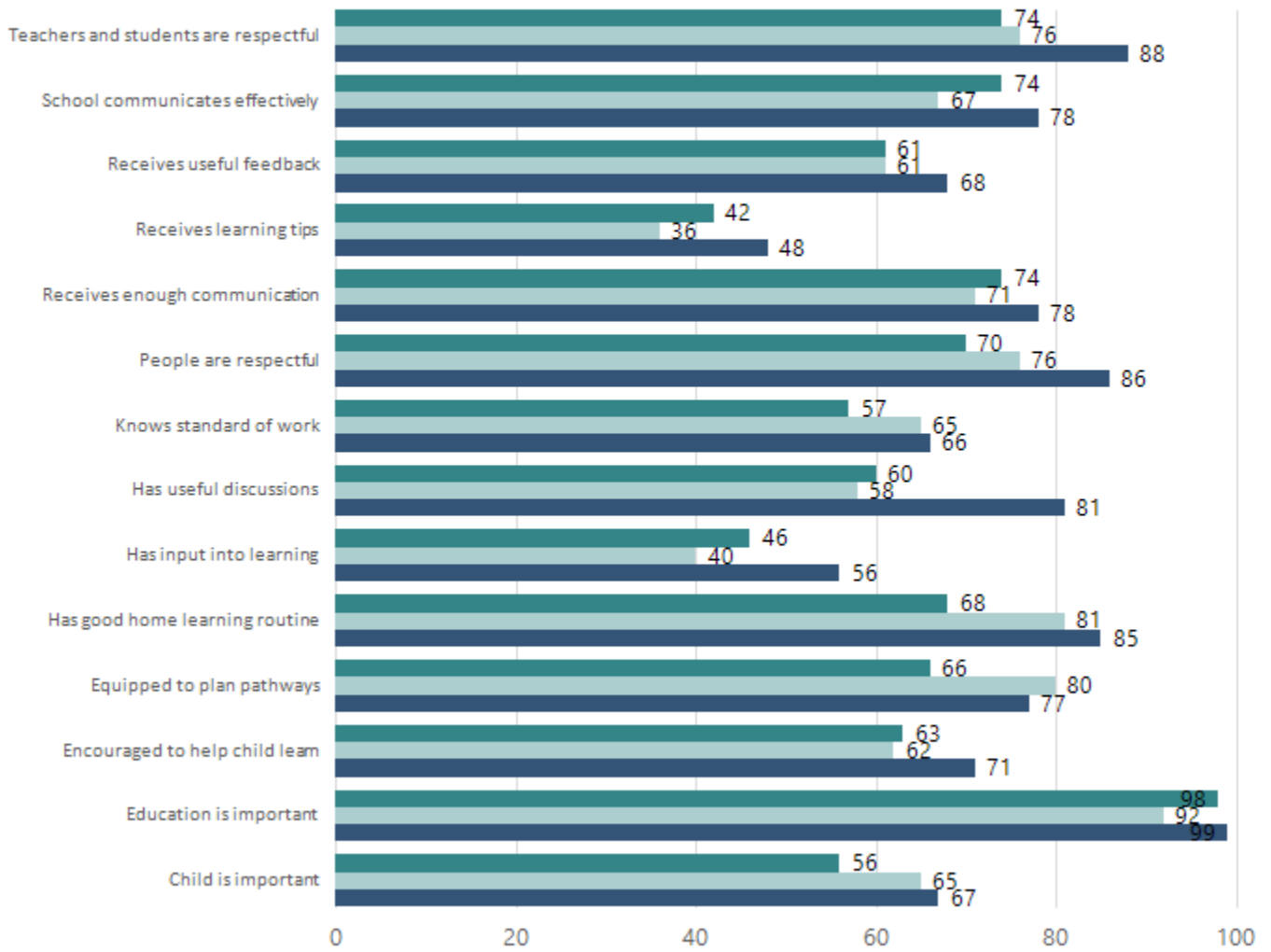
Attendance Comment

In South Australia, all children and young people must be in school from 6 years to 16 years old. They must attend a government or non-government school full time. From age 16 to 17 however, young people must attend school or an approved learning program (such as an apprenticeship, traineeship, accredited course or university). Schools and parents must encourage and support students to come to school every day. Parents and caregivers must make sure their child is enrolled in a school, and attends school all day and everyday it is open, unless a child is sick or has an approved exemption. Teachers and leaders actively follow up when a student misses school, including recording all absences and non-attendance. All schools in South Australia have local attendance procedures governed under the Education and Children's Services Regulations 2020.

Parent Opinion Survey Results

Proportion of agree/strongly agree response(%)

2021 2022 2023



Data Source: 2023 Department for Education Parent Opinions Survey, Term 3 2023.

Intended Destination

Leave Reason	Number	%
NG - ATTENDING NON-GOV SCHOOL IN SA	2	20.0%
NT - LEFT SA FOR NT	2	20.0%
TG - TRANSFERRED TO SA GOVERNMENT SCHOOL	5	50.0%
U - UNKNOWN	1	10.0%

Data Source: Department for Education Destination Data Report, 2023. Data extract term 3 2023. Data shows recorded destinations for students that left the school in the previous year. Data is uploaded by schools in term 3 and may not reflect final or total figures at time of report creation.

Highest Qualifications held by the teaching workforce and workforce composition

All teachers at this school are qualified and registered with the SA Teachers Registration Board.

Qualification Level	Number of Qualifications
Bachelor's degrees or Diplomas	24
Postgraduate Qualifications	11

Data Source: Data extracted from Mandatory Workforce Information Collections as on the last pay date of June 2023. As self-reported by staff in the system.

Please note: Data includes staff who are Actively employed and on extended paid leave. Please note only the highest qualification of the Teaching staff is reported. Excludes any number of other certifications earned.

Workforce composition including indigenous staff

	Teaching Staff		Non-Teaching Staff	
	Indigenous	Non-Indigenous	Indigenous	Non-Indigenous
Full-Time Equivalents	0.0	29.7	0.8	18.0
Persons	0.0	35.0	1.0	27.0

Data Source: Data extracted from Mandatory Workforce Information Collection as on the last pay date of June 2023.

Please note: Data includes staff who are actively employed and on extended paid leave. "Indigenous category" is self-reported by staff in the system.

Financial Statement

Funding Source	Amount
Grants: State	\$54412
Grants: Commonwealth	\$38500
Parent Contributions	\$163131.73
Fund Raising	\$62374.40
Other	\$7217

Data Source: School supplied data.